

# FLAX EVO P 20 FE

## Technical Sheet

8" subwoofer

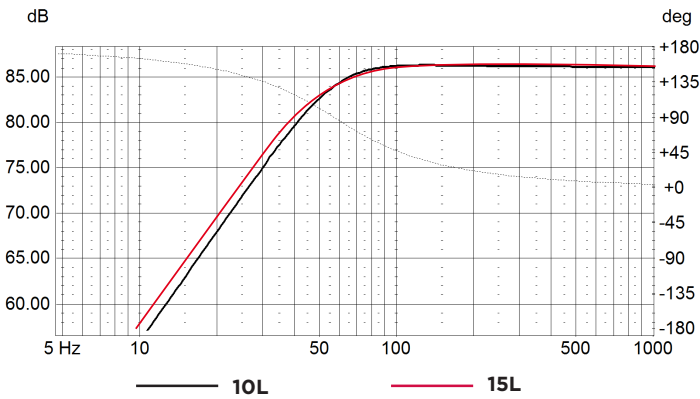


## SPECIFICATIONS

Nominal power	250W RMS	
Maximum power	500W	
Sensitivity (2.83V/1m)	82.5dB	
Cone	Flax <sup>®</sup>	
Surround	Rubber	
Nom. impedance	4 Ohms	
DC resistance	3.4 Ohms	
VC diameter	38mm	1 <sup>1</sup> / <sub>2</sub> "
VC height	28mm	1 <sup>1</sup> / <sub>8</sub> "
Former	Glass Fiber	
Layers	4	
Wire	Copper	
Inductance	1.7mH	
Xmax	10mm	0 <sup>3</sup> / <sub>8</sub> "
Magnet dxh (mm)	120x32mm	4 <sup>3</sup> / <sub>4</sub> "x1 <sup>1</sup> / <sub>4</sub> "
Flux density	0.75T	
Gap height	8mm	0 <sup>5</sup> / <sub>16</sub> "
Net weight	3.5kg	6.6lbs

## FREQUENCY RESPONSE/IMPEDANCE

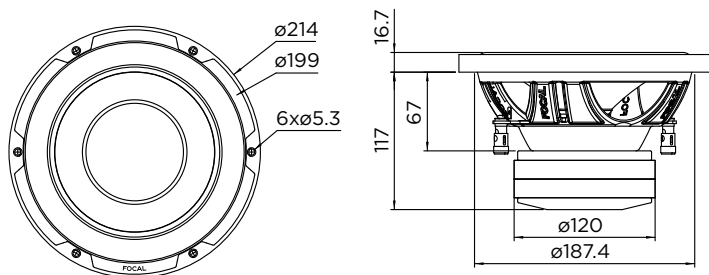
Sealed enclosure



## PARAMETERS

Fs	38.5Hz
Vas	12L
Qts	0.56
Ges	0.61
Qms	5.5
Re	3.4Ohms
Sd	216cm <sup>2</sup>
Cms	0.18mm/N
Mms	95g
BL	11.5N/A
SPL	82.5dB

## MECHANICAL DRAWING



## SUGGESTED APPLICATION

Ported enclosure

Volume	F-3 (Hz)	Ø port	Port length
10L (0.35 cu.ft.)	45Hz	7cm - 2 <sup>3</sup> / <sub>4</sub> "	30cm - 12"
15L (0.52 cu.ft.)	35Hz	7cm - 2 <sup>3</sup> / <sub>4</sub> "	35cm - 13 <sup>3</sup> / <sub>4</sub> "
20L (0.7 cu.ft.)	30Hz	7cm - 2 <sup>3</sup> / <sub>4</sub> "	35cm - 13 <sup>3</sup> / <sub>4</sub> "

Sealed enclosure

Volume	F-3 (Hz)
10L (0.35 cu.ft.)	52Hz
15L (0.52 cu.ft.)	50Hz